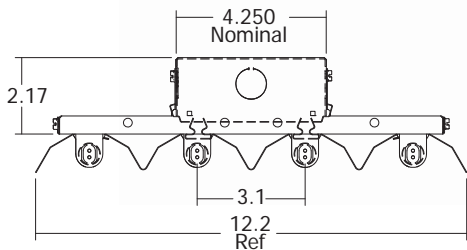
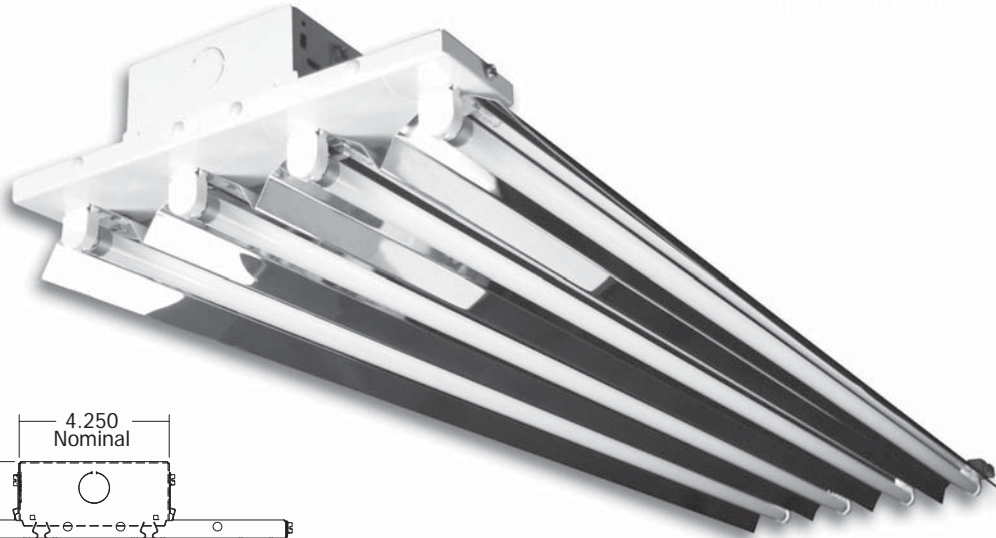


# EXPRESS™

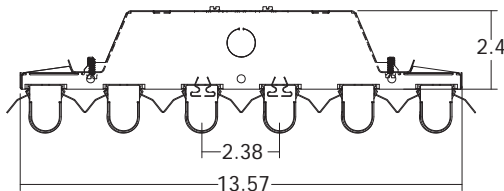
## High Bay Kit



### 4 and 6-Lamp T8 and T5 Component Kit



4-Lamp end view showing reflector configuration and lamp location



6-Lamp end view showing reflector configuration and lamp location

**Modular Highbay Kits from A.L.P. feature common parts so that you can offer your customers a wide variety of highbay options with minimal stocking requirements. Choose the basic Express™ model (pictured above) or ACR™ with upgraded features. Maximize your inventory and use your storage capacity more profitably.**

**Flexible:** Engineered for both T5 and T8 lamps. High-reflectance white or Miro4™ specular optics serve a wide range of high and low bay applications.

**Economical:** Simple design provides excellent optical performance in an economical high bay package.

**Optional Uplight:** Engineered slot locations provide indirect illumination adding an additional design options.

#### Specifications

Reflector Material: Miro4™ or Baked White Enamel  
Housing Material: Die Formed CRS

#### Express Housing Parts

##### 4-Lamp Housing Parts

ACR SEPCO4 MOD	4-lamp ballast cover
SEP240B	4-lamp housing body

##### 6-Lamp Housing Part

300-240b-ACR	6-lamp housing body
--------------	---------------------

#### Express Socket Assembly Parts

##### 4-Lamp Socket Plate Sets

ACR 4T5SPEP	T5 socket plate
ACR 4T8SPEP	T8 socket plate
ACR 4SPT*	End plate and socket wiring channel

##### 6-Lamp Socket Plate Sets\*\*

ACR 6T5SPEP	One piece T5 socket/end plate for socket wiring
ACR 6T8SPEP	One piece T8 socket/end plate for socket wiring

\*Same part used for T5 or T8 in any 4-lamp application

\*\*6-lamp socket/end plate is one piece

#### Express Highbay/Lowbay Reflector Options

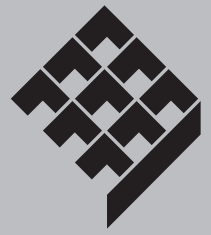
##### 4-Lamp Reflectors

EXP 4RMREFL	4-Lamp Miro 4™ Reflector
EXP 4RWREFL	4-Lamp High Reflectance White Reflector

##### 6-Lamp Reflectors

EXP 6RMREFL	6-Lamp Miro 4™ Reflector
EXP 6RWREFL	6-Lamp High Reflectance White Reflector
EXPREFLRAIL4	Rail for 6-lamp fixture to close wireway

\*\* (2) EXPREFLRAIL4 must be ordered for all 6-lamp EXP configurations to comply with UL standards.

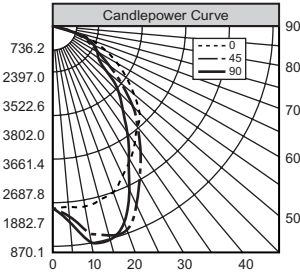


## 4 and 6-Lamp T5 and T8 Photometric Data

### 4-Lamp T5 High Bay Lamps: F54T5HO Rated Lumens: 5000

#### ZONAL LUMEN SUMMARY

ZONE	LUMENS	%BARELAMP	%LUMINAIRE
0-30	6656	33.3	33.7
0-40	10458	52.3	53.0
0-60	16807	84.0	85.2
0-90	19731	98.7	100.0
90-120	0	0.0	0.0
90-130	0	0.0	0.0
90-150	0	0.0	0.0
90-180	0	0.0	0.0
0-180	19731	98.7	100.0



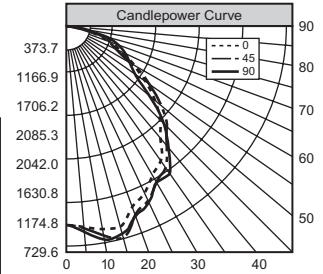
#### COEFFICIENTS OF UTILIZATION

Room Cavity Ratio	CEILING CAVITY REFLECTANCE											
	.80				.70				.50			
	70	50	30	10	70	50	30	10	70	50	30	10
0	112	112	112	112	109	109	109	109	104	104	104	104
1	103	99	95	92	101	97	94	91	93	90	88	88
2	95	88	82	77	92	86	81	76	83	78	74	74
3	87	78	71	65	85	77	70	65	74	68	64	64
4	80	70	62	56	78	68	61	56	66	60	55	55
5	73	62	54	48	71	61	53	48	59	52	47	47
6	68	56	47	42	66	55	47	41	53	46	41	41
7	62	50	42	36	61	49	42	36	48	41	36	36
8	57	45	37	32	56	44	37	31	43	36	31	31
9	53	40	33	27	51	40	32	27	39	33	27	27
10	49	37	29	24	48	36	29	24	35	29	24	24

### 4-Lamp T8 High Bay Lamps: F32T8 Rated Lumens: 2950

#### ZONAL LUMEN SUMMARY

ZONE	LUMENS	%BARELAMP	%LUMINAIRE
0-30	3247	27.5	29.3
0-40	5332	45.2	48.2
0-60	9005	76.3	81.3
0-90	11072	93.8	100.0
90-120	0	0.0	0.0
90-130	0	0.0	0.0
90-150	0	0.0	0.0
90-180	0	0.0	0.0
0-180	11072	93.8	100.0



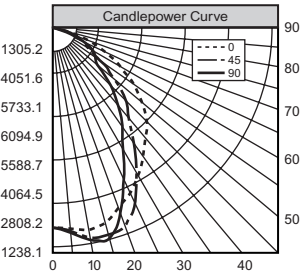
#### COEFFICIENTS OF UTILIZATION

Room Cavity Ratio	CEILING CAVITY REFLECTANCE											
	80				70				50			
	70	50	30	10	70	50	30	10	50	30	10	110
0	117	117	117	117	115	115	115	115	110	110	110	110
1	109	105	102	99	107	103	100	97	99	96	94	94
2	101	94	88	83	99	92	87	82	89	84	81	81
3	93	84	77	72	91	83	76	71	80	75	70	70
4	86	76	68	62	84	74	67	62	72	66	61	61
5	79	68	60	54	77	67	59	53	65	58	53	53
6	73	61	53	47	71	60	52	47	58	52	46	46
7	68	55	47	41	66	54	47	41	53	46	41	41
8	62	50	42	36	61	49	41	36	48	41	36	36
9	58	45	37	32	56	44	37	31	43	36	31	31
10	53	41	33	28	52	40	33	28	39	32	28	28

### 6-Lamp T5 High Bay Lamps: F54T5HO Rated Lumens: 5000

#### ZONAL LUMEN SUMMARY

ZONE	LUMENS	%BARELAMP	%LUMINAIRE
0-30	11090	37.0	35.7
0-40	17185	57.3	55.4
0-60	26838	89.5	86.4
0-90	31046	103.5	100.0
90-120	0	0.0	0.0
90-130	0	0.0	0.0
90-150	0	0.0	0.0
90-180	0	0.0	0.0
0-180	31046	103.5	100.0



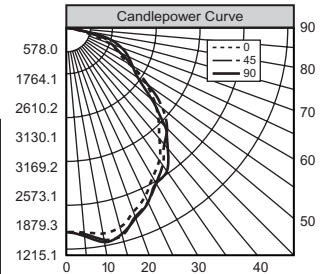
#### COEFFICIENTS OF UTILIZATION

Room Cavity Ratio	CEILING CAVITY REFLECTANCE											
	80				70				50			
	70	50	30	10	70	50	30	10	50	30	10	115
0	123	123	123	123	120	120	120	120	115	115	115	115
1	115	111	107	104	112	109	105	102	104	102	99	99
2	106	99	94	89	104	98	92	88	94	90	86	86
3	99	89	82	77	96	88	81	76	85	79	75	75
4	91	80	73	67	89	79	72	66	77	70	65	65
5	84	72	64	58	82	71	63	57	69	62	57	57
6	78	65	57	51	76	64	56	51	63	56	50	50
7	72	59	51	45	70	58	50	45	57	50	45	45
8	67	53	45	40	65	53	45	39	51	44	39	39
9	61	48	40	35	60	48	40	35	46	39	34	34
10	57	44	36	31	56	43	36	31	42	35	31	31

### 6-Lamp T8 High Bay Lamps: F32T8 Rated Lumens: 2950

#### ZONAL LUMEN SUMMARY

ZONE	LUMENS	%BARELAMP	%LUMINAIRE
0-30	4952	28.0	28.8
0-40	8082	45.7	47.0
0-60	13825	78.1	80.3
0-90	17206	97.2	100.0
90-120	0	0.0	0.0
90-130	0	0.0	0.0
90-150	0	0.0	0.0
90-180	0	0.0	0.0
0-180	17206	97.2	100.0



#### COEFFICIENTS OF UTILIZATION

Room Cavity Ratio	CEILING CAVITY REFLECTANCE											
	80				70				50			
	70	50	30	10	70	50	30	10	50	30	10	108
0	116	116	116	116	113	113	113	113	108	108	108	108
1	107	102	99	95	104	100	97	94	96	93	91	91
2	98	90	84	79	95	89	83	78	85	80	76	76
3	90	80	73	67	88	79	72	66	76	70	66	66
4	83	72	63	57	80	70	63	57	68	61	57	57
5	76	63	55	49	74	62	54	49	60	53	49	49
6	70	57	49	42	68	56	48	42	54	47	42	42
7	64	51	43	37	62	50	43	37	49	42	37	37
8	59	46	38	32	58	45	37	32	44	37	32	32
9	54	41	33	28	53	41	33	28	39	32	28	28
10	50	37	30	25	49	37	30	25	36	29	24	24

